



Prime Tex Inc.

877-853-4500

CUBICLE CURTAINS



made to order cubicle curtains

All of Harbor Linen's "made to order" cubicle curtains meet both NFPA 701 and California Fire Marshall Title 19 test methods. Available with or without regulation approved mesh in white or beige. Other colors available on special orders.

Not all cubicle curtains are made the same - fabric choice is only half the product. Proper construction truly ensures long life and the quality finished product you desire. No one can offer you a better product.



- 100% polyester mesh
- Triple folded with lock stitching
- Nickel plated rust proof grommets
- Felled panel seams give a finished appearance on both sides of the curtain
- Double needle stitching of mesh & fabric create a crisp, clean, finished appearance
- Side & bottom hems feature double folded "I" lock
- Stitched dual needle construction
- Permanent stiffener in side hems of mesh provides a sharp, clean appearance



chateau



oxford



trellis





windsor



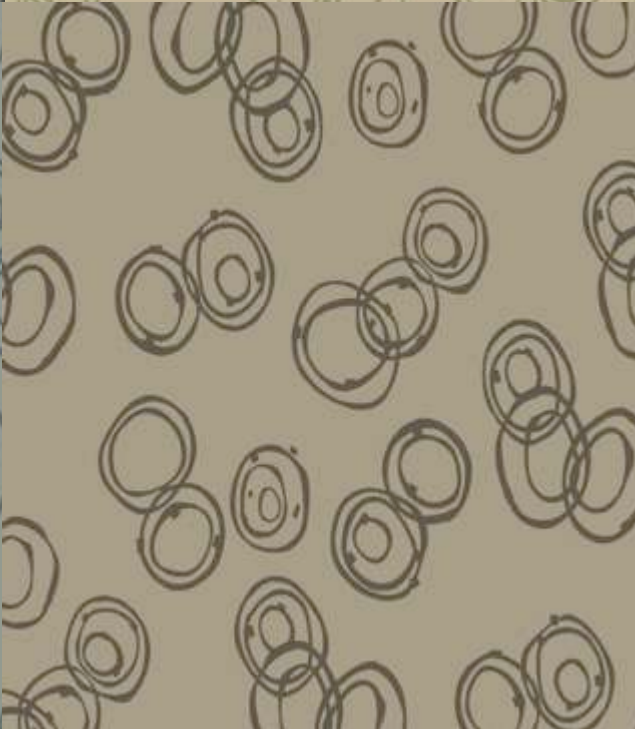
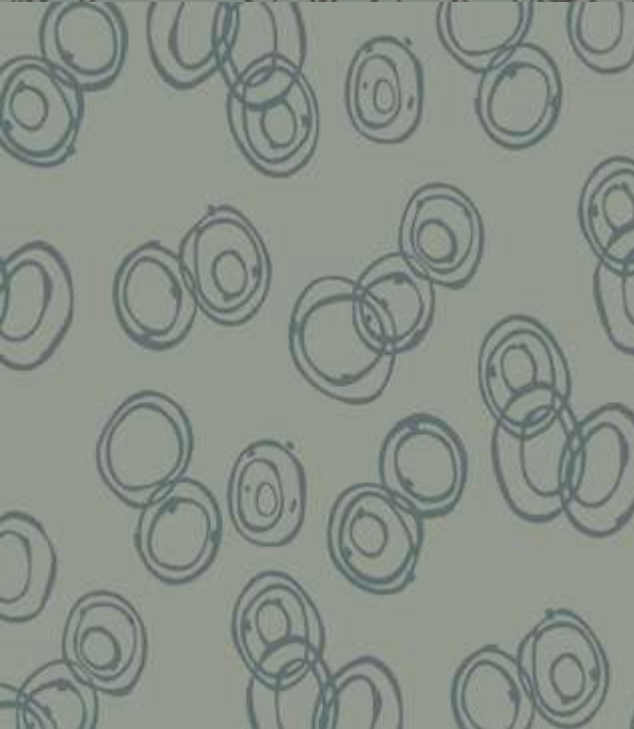


argo





lynx





new
shadow



pickupstix



riverbirch



xanadu